

MAGNUM

Trailer & Equipment Inc.

ALUMINUM LOAD LEVELERS



- BUILT TO FIT ANY MAKE OF TRAILER
- 25,100 LBS VERTICAL LOAD RATING, EVENLY DISTRIBUTED OVER 6'
- LIGHT WEIGHT, HIGH STRENGTH DESIGN
- CORRUGATED FULL WIDTH FACE PLATE GIVES UNIFORM STRENGTH RATING
- WIDE BASE FOR BETTER STABILITY
- STEEL REINFORCED KEY HOLES FOR TIE DOWN CHAINS PREVENTS ALUMINUM FROM WEARING
- REPLACEABLE PRESSURE-TREATED WOOD TOP PLATE

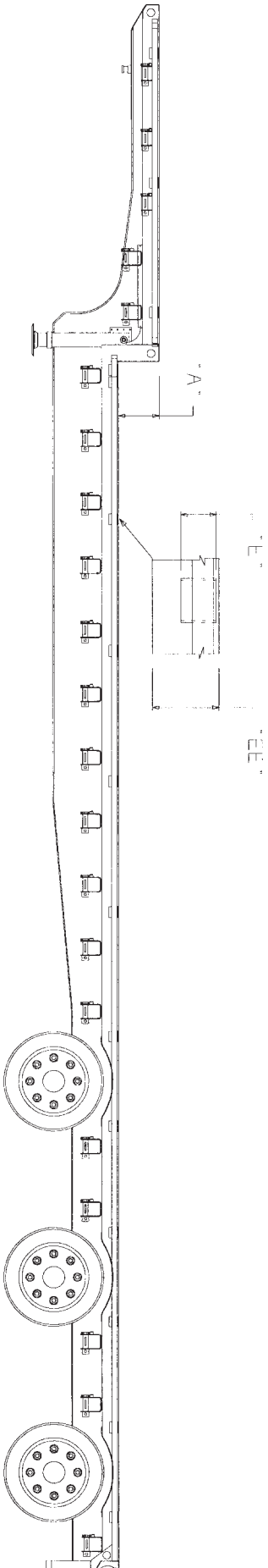
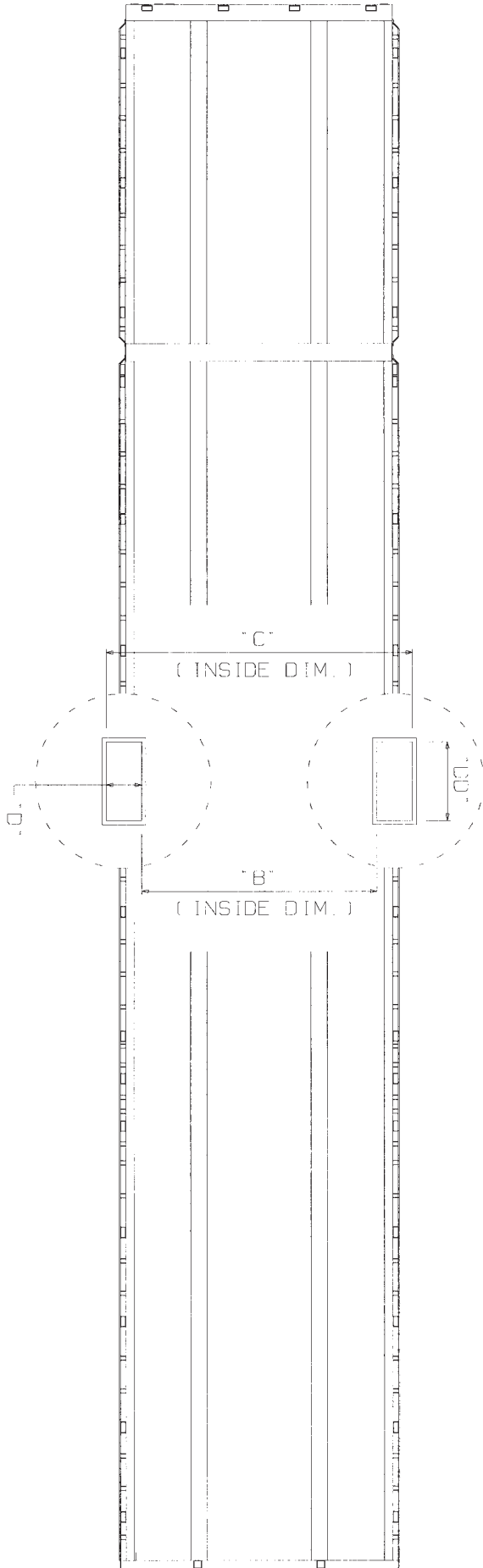
ORDER INFORMATION ON BACK

ORDER DESK

604-855-7544 or 1-800-661-3406

FAX: 604-855-7811

LOAD LEVELER - ORDER INFORMATION



"A"	Deck to Deck Height	"C"	Pocket OD. to OD.	"DD"	Length of Pocket ID.	"EE"	Outer Cap Depth
"B"	Pocket ID. to ID.	"D"	Width of Pocket ID.	"E"	Pocket Depth		